

Section G: Fleece Wool

**Chief Steward: Mr. Peter McAllister, Ph 6847 2727
OPEN TO ALL WOOLGROWERS**

- Each Fleece eligible in one class only
- Rams' Fleeces eligible only for classes specially designated for Rams' fleeces. Fleeces from sheep that have been housed or rugged are eligible only for Classes 1-5 inclusive.
- An Exhibitor may enter any number of fleeces in any one class.
- **LENGTH OF STAPLE:** Length of staple on Merino Fleeces must not exceed 115mm nor be in excess of 12 months' growth.

Grand Champion Fleece of Show: Ribbon and “Wyuna” perpetual trophy donated by the late Mr. D. J. Beveridge for annual competition, and \$100 sponsored by Jemalong Wool

Reserve Grand Champion Fleece: Donated by Olsson Stock Blocks - Stock Blocks.

Champion Ewe or Wether Fleece: Ribbon and trophy donated by Don MacDonald Wool

Reserve Champion Ewe or Wether Fleece: Trophy donated by Quality Wool.

Group Of 3 Merino Fleeces – Class 14: Trophy (Stock Blocks) donated by Olsson Stock Blocks.

Most Successful Exhibitor Open Classes: Trophy donated by Nutrien Ag Solutions.

Point Score for most successful exhibitor:

1st in Class:	5 points
2nd in Class:	4 points
Grand Champion:	3 points
Reserve Champion:	2 points
Champion:	1 point

When the hard work is done...
Reap the rewards here...

Chad Wool Pty Ltd



WOOL BROKERS & WOOL BUYERS

Laserscan Testing ♦ Cash Settlement ♦ On Farm Pick-up

Dubbo

Purvis Lane

Don & Julie Chad
Tim Blackman

Walgett

Carinda Road

Grant Fiechtner
0438 279 388

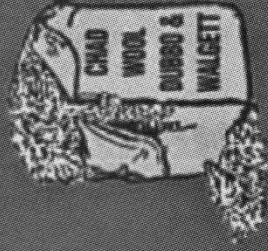
Don

0427 459 766

(02) 6882 2587

Ah: 6887 3695

Fax: 6884 1816



Email: chadwool@tpg.com.au

Merino Fleeces

All fleeces to be skirted except Commercial Group

Open Housed Classes

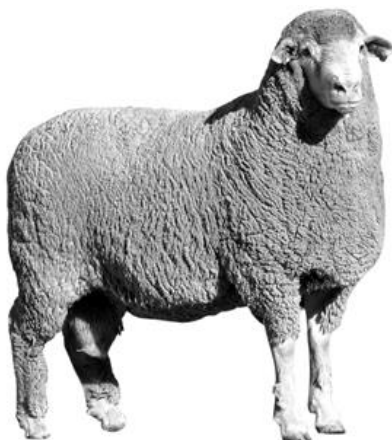
1. Fine Wool Ram Fleece - Housed
2. Medium Wool Ram Fleece - Housed
3. Strong Wool Ram Fleece - Housed
4. Fine Wool Fleece - Housed
5. Medium Wool Fleece - Housed
6. Strong Wool Fleece - Housed

Open Classes

7. Fine Wool Ram Fleece
8. Medium Wool Ram Fleece
9. Strong Wool Ram Fleece
10. Fine Wool Fleece
11. Medium Wool Fleece
12. Strong Wool Fleece
13. Fleece, carrying lamb's tip
14. Group of three (3) Merino Fleeces unskirted, to be judged for Best Commercial Value. Housed or rugged are not eligible.

Other Than Merino Fleeces

15. Dohne Merino Fleece
16. Crossbred Fleece
17. Border Leicester Ewe Fleece
18. Border Leicester Ram's Fleece
19. Children's Pet Sheep Fleece - Merino
20. Children's Pet Sheep Fleece - other



Shearing Supplies NSW Pty Ltd DUBBO

The Shearing Machinery Specialist

- ★ Electric Shearing Gear
- ★ Grinders and Crutchers
- ★ Handpieces, - Combs - Cutters
- ★ Wool Tables - rectangular and round
- ★ TPW Woolpresses
- ★ Shearers Clothing and Footwear
- ★ Back Supports



**COD &
Mail orders
A Speciality!**

**PHONE US
NOW!**

★ Trade In Specialists ★ Repair All Gear - In Shop and On Farm

Agents for Moffat Virtue, TPW, Lister, Sunbeam,
Heiniger, Stock Shear, Wide Grind

*Service & Warranty Agents for
Lyc0 & Stevylon Woolpresses*

CONTACT US FOR MORE INFORMATION

**189 Fitzroy Street Dubbo
Phone: 6884 2707
Orders Only: 1800 025 113
Ah: Meg Bush: 6882 3867**